

BUDGET GUIDE 17
FURNITURE AND FLOOR COVERINGS

~~UNCREATIVE~~



Rental furniture and floor coverings
for exhibitions, events and congresses

ICONS

≡ WIDTH

≡ DEPTH

≡ HEIGHT

≡ SEAT HEIGHT

□ TABLE-TOP

○ TABLE-TOP OVAL SIZE

∅ DIAMETER

↻ SWIVEL

🔒 LOCKABLE

≡ STACKABLE

≡ LINKABLE

💡 ILLUMINABLE

🔌 SOCKET REQUIRED



SUSTAINABLE

These products are sustainable as they are (partially) recyclable, repairable, renewable and/or logistically beneficial (lightweight and/or stackable).



CUSTOMISABLE

These products are customisable as they can be (partially) adapted in colour, fabric, prints and/or combined with different frames.



RENTAL FURNITURE

CHAIRS	4
ARMCHAIRS, SOFAS & LOUNGES	6
STOOLS & BARSTOOLS	8
TABLES & BAR TABLES	9
COUNTERS & SHOWCASES	14
CONFERENCE & OFFICE FURNITURE	14
DISPLAYS & SHELVES	16
MISCELLANEOUS	17

FLOOR COVERINGS

CARPET	19
VINYL	19
ARTIFICIAL GRASS	20
CARPET TILES	21
ACCESSORIES	21

TERMS & CONDITIONS

GENERAL TERMS AND CONDITIONS	23
------------------------------------	----

CHAIRS

40/4
SC42
COLOURS

┆|48 ┆|53
全77 全45
┆┆┆



AMAGNI
LC72
COLOURS

┆|59 ┆|51
全81 全46



ASTI
SC46
COLOURS

┆|44 ┆|48
全76 全45
┆┆┆



ASTI LINKS
SC40X
COLOURS



BISOU
SC30
COLOURS



┆|59 ┆|57
全76 全46



CANOSA
SC50
COLOURS



┆|52 ┆|53
全85 全47
┆┆┆



CATIFA
SC28
COLOURS



┆|55 ┆|51
全79 全45
┆┆┆



CATIFA W/A
SC58
COLOURS



┆|58 ┆|51
全79 全45
┆┆┆



CRISTAL
SC43
COLOURS



┆|59 ┆|60
全80 全45
┆┆┆



CUNEO
OC16
COLOURS



┆|49 ┆|46
全81 - 95
全41 - 54 ↻



CUNEO HIGH BACK
OC15
COLOURS



┆|49 ┆|46
全99 - 112
全40 - 54 ↻



GARDEN
CHAIR
GF29
COLOURS



┆|39 ┆|93
全92 全45



GHOST
SC57
COLOURS



┆|38 ┆|45
全91 全
┆┆┆



HARRIS
SC34 ARMCHAIR
COLOURS



┆|59 ┆|50
全91 全50



HOOP
SC29
COLOURS



┆|58 ┆|54
全78 全48
┆┆┆



LARINO
SC59
COLOURS



┆|52 ┆|47
全77 全45
┆┆┆



LE MANS
SC12
COLOURS



┆|41 ┆|52
全92 全47
┆┆┆



LIDO
SC38
COLOURS



┆|51 ┆|55
全80 全45
┆┆┆



LIMONE
SC69
COLOURS



┆|50 ┆|60
全80 全45
┆┆┆



CHAIRS

MADISON
SC25
COLOURS



┆|46 ┆|52
全 83 上 46
┆┆



MALAGA
SC03
COLOURS



┆|54 ┆|51
全 77 上 47
┆┆



MALIBU A
SC21
COLOURS



┆|55 ┆|50
全 79 上 45
┆┆



MALIBU B
SC22
COLOURS



┆|59 ┆|54
全 75 上 45
┆┆



MEMPHIS A
SC10
COLOURS



┆|48 ┆|52
全 81 上 50
┆┆



MEMPHIS LINKS
SC10X
COLOURS



┆|



MONTERREY
SC13
COLOURS



┆|43 ┆|48
全 67 上 45
┆┆



MONZA
SC02
COLOURS



┆|53 ┆|59
全 79 上 44
┆┆



MUNICH
SC05
COLOURS



┆|59 ┆|57
全 80 上 47



ORLANDO
SC54
COLOURS



┆|80 ┆|50
全 46 上 41



ORSO
SC70
COLOURS



┆|48 ┆|55
全 83 上 48



PANTON
SC32
COLOURS



┆|47 ┆|58
全 83 上 41
┆┆



PATTI
SC16
COLOURS



┆|56 ┆|54
全 81 上 46
┆┆



PLASTIC SIDECHAIR
SC99
COLOURS



┆|46 ┆|50
全 80 上 46



PONZO
SC33
COLOURS



┆|60 ┆|48
全 88 上 46



PONZO W/A
SC31
COLOURS



┆|60 ┆|48
全 88 上 46



SMOKE
SC47 FOLDING CHAIR
COLOURS



┆|47 ┆|45
全 81 上 44
┆┆



SOLARA A
OC12 TYPISTS CHAIR
COLOURS



┆|57 ┆|45
全 79 - 93
上 44 - 54



SOLARA B
OC13 OPERATORS CHAIR
COLOURS



┆|57 ┆|45
全 78 - 93
上 44 - 54



SOLARA C
OC14 COUNTER CHAIR
COLOURS



┆|57 ┆|45
全 101 - 126
上 56 - 80



TESS
SC27

COLOURS



┆|55 ┆|51
全 79 ㄣ48
ㄣ



UNI
SC44

COLOURS



┆|47 ┆|53
全 79 ㄣ46
ㄣ



ARMCHAIRS, SOFAS & LOUNGES

AIKO
LC71

COLOURS



┆|66 ┆|57
全 69 ㄣ46



ARIANO
LC28

COLOURS



┆|66 ┆|72
全 82 ㄣ47



BEANIE

LC59 LARGE BEAN BAG

COLOURS



┆|70 ┆|70
全 75



CADIZ

EF16 NO BACK

COLOURS



┆|60 ┆|60
全 45 ㄣ45



CADIZ I
EF14 SEAT

COLOURS



┆|60 ┆|60
全 79 ㄣ45



CADIZ II

EF15 CORNER SEAT

COLOURS



┆|60 ┆|60
全 79 ㄣ45



CUBE (LIT)

LC36

COLOURS



┆|43 ┆|43
全 43 ㄣ43
☀️ ⚡️



CHESTER II

EF12 SOFA

COLOURS



┆|154 ┆|82
全 71 ㄣ45



GAMBETTA

LC40

COLOURS



┆|160 ┆|76
全 90 ㄣ38



FAVARA II

EF11 SOFA

COLOURS



┆|142 ┆|68
全 72 ㄣ46



FAVARA I

EF10 ARMCHAIR

COLOURS



┆|88 ┆|68
全 72 ㄣ46



HELLO

LC20

COLOURS



┆|75 ┆|75
全 70 ㄣ41



HELLO LEATHER

LC20

COLOURS



┆|75 ┆|75
全 70 ㄣ41



LENTINI

EF17 SEAT

COLOURS



┆|65 ┆|65
全 45 ㄣ45



ARMCHAIRS, SOFAS & LOUNGES

MODESTO SQUARE

LC44
COLOURS



∣|60 ∣ 60
全 45 高 45



MODESTO WEDGE

LC45
COLOURS



∣|30-60 ∣ 60
全 45 高 45



MOOREA

SC45
COLOURS



∣|60 ∣ 58
全 77 高 48



POMP I

LC24
COLOURS



∣|50 ∣ 50
全 50 高 50



POMP II

LC25
COLOURS



∣|100 ∣ 50
全 50 高 50



RAVELLO

BED3
COLOURS



∣|100 ∣ 45
全 45 高 45



ROMA

BED2
COLOURS



∣|160 ∣ 72
全 50 高 50
⚡



SNAKE

LC35
COLOURS



∣|120 ∣ 42
全 44 高 44
⚡



RIMINI

BED1 BENCH SEAT
COLOURS



∣|200 ∣ 45
全 45 高 45



SOLANA I

EF19 ARMCHAIR
COLOURS



∣|78 ∣ 67
全 76 高 43



SOLANA II

EF20 SOFA
COLOURS



∣|134 ∣ 67
全 76 高 43



SOLANA III

EF21 SOFA
COLOURS



∣|189 ∣ 67
全 76 高 43



UMBRIA I

LC23 LEATHERETTE TUB CHAIR
COLOURS



∣|67 ∣ 64
全 76 高 43



UMBRIA II

LC33
COLOURS



∣|127 ∣ 64
全 76 高 43



VEGAS I

LC16 ARMCHAIR
COLOURS



∣|60 ∣ 66
全 76 高 38



VEGAS II

LC17 2-SEATER
COLOURS



∣|120 ∣ 66
全 76 高 38



VENICE

LC12 UNIT SEAT
COLOURS



∣|60 ∣ 60
全 70 高 38



VENICE CORNER

LC13 SEAT
COLOURS



∣|60 ∣ 60
全 70 高 38



VICENZA 
LC18 TUB CHAIR
COLOURS

┆|69 ┆|59
至78 ㄱ49



VIENNA 
LC07 UNIT SEAT
COLOURS

┆|65 ┆|74
至74 ㄱ39



VILAMOURA COFFEE TABLE
GF37
COLOURS

┆|89 ┆|50
至32



VILAMOURA NO BACK
GF36
COLOURS

┆|75 ┆|75
至42 ㄱ42



VILAMOURA UNIT
GF35
COLOURS

┆|75 ┆|67
至64 ㄱ42



VILAMOURA UNIT L/H
GF33
COLOURS

┆|75 ┆|75
至64 ㄱ42



VILAMOURA UNIT R/H
GF34
COLOURS

┆|75 ┆|75
至64 ㄱ42




STOOLS & BARSTOOLS

AMAGNI BAR 
BS39
COLOURS


┆|51 ┆|46
至85 ㄱ73



BONNIE
BS43
COLOURS

┆|41 ┆|41
至70-90
ㄱ53-73 



CATIFA BAR 
BS31
COLOURS

┆|62 ┆|51
至108 ㄱ76
ㄱ




CUBO BAR 
BS30
COLOURS

┆|32 ┆|32
至82 ㄱ82



FLASH BAR
BS19
COLOURS

┆|40 ┆|40
至78-98
ㄱ59-79 



GINNY BAR 
BS36
COLOURS

┆|44 ┆|48
至90 ㄱ73
ㄱ



LARINO BAR 
BS40
COLOURS

┆|54 ┆|50
至110 ㄱ75
ㄱ



LE MANS BAR 
BS12
COLOURS

┆|41 ┆|46
至104 ㄱ77



LIMONE BAR
BS38
COLOURS

┆|43 ┆|57
至98 ㄱ78
ㄱ



MALIBU BAR
BS21
COLOURS

┆|40 ┆|41
至67-94
ㄱ58-85



MIAMI BAR 
BS04
COLOURS

┆|45 ┆|51 至95
ㄱ74



STOOLS & BARSTOOLS

**MIAMI
LOW STOOL**
BS03
COLOURS
■ ■ ■ ■ ■ ■ ■ ■ ■ ■
|45 |41
全 46 高 46



MIURA BAR
BS41
COLOURS
■ ■ ■ ■ ■ ■ ■ ■ ■ ■
|47 |40
全 81 高 78
⌚



**MONTERREY
BAR**
BS13
COLOURS
■ ■ ■ ■ ■ ■ ■ ■ ■ ■
|43 |46
全 95 高 77
⌚



MOOS BAR
BS32
COLOURS
■ ■ ■ ■ ■ ■ ■ ■ ■ ■
|37 |39
全 75-90
高 64-79 ⌚



MOSTAR BAR
BS16
COLOURS
■ ■ ■ ■ ■ ■ ■ ■ ■ ■
|40 |40
全 61-86
高 61-86 ⌚



MUNICH BAR
BS02
COLOURS
■ ■ ■ ■ ■ ■ ■ ■ ■ ■
|50 |63
全 107 高 72
⌚



ORSO BAR
BS42
COLOURS
■ ■ ■ ■ ■ ■ ■ ■ ■ ■
|39 |41
全 97 高 75



PARONA BAR
BS39
COLOURS
■ ■ ■ ■ ■ ■ ■ ■ ■ ■
|41 |44 全 96
高 78 ⌚



PATTI BAR
BS06
COLOURS
■ ■ ■ ■ ■ ■ ■ ■ ■ ■
全 82 高 82
⌚



PESIA BAR
BS15
COLOURS
■ ■ ■ ■ ■ ■ ■ ■ ■ ■
|36 |43
全 77-87
高 70-80 ⌚



PETILIA BAR
BS33
COLOURS
■ ■ ■ ■ ■ ■ ■ ■ ■ ■
|44 |40
全 61-85
高 50-74 ⌚



PONZO BAR
BS37
COLOURS
■ ■ ■ ■ ■ ■ ■ ■ ■ ■
|46 |46
全 96-116
高 62-83



QUID BAR
BS28
COLOURS
■ ■ ■ ■ ■ ■ ■ ■ ■ ■
|54 |48
全 87 高 82
⌚



TESS BAR
BS27
COLOURS
■ ■ ■ ■ ■ ■ ■ ■ ■ ■
|39 |41
全 78-105
高 61-87 ⌚



ZANZI BAR
BS18 ADJUSTABLE HEIGHT
COLOURS
■ ■ ■ ■ ■ ■ ■ ■ ■ ■
|38 |38
全 53-78
高 53-78 ⌚



TABLES & BAR TABLES

BILBAO 70
GF20 GREEN FROSTED
GLASS TOP
COLOURS
■ ■ ■ ■ ■ ■ ■ ■ ■ ■
全 73 Ø60



BURGOS 70
GF21 GLASS TOP
COLOURS
■ ■ ■ ■ ■ ■ ■ ■ ■ ■
全 73 Ø60



CALAIS 70
NT12
COLOURS
■ ■ ■ ■ ■ ■ ■ ■ ■ ■
全 72 Ø60



CALGARY 70 A
NT03

COLOURS



至 75 Ø80



CANTERBURY 70 A
NT15

COLOURS



至 75 Ø60



CANTERBURY 70 B
NT14

COLOURS



至 75 Ø75



CANTERBURY 70 C
NT13

COLOURS



至 75 Ø90



CANTERBURY 70 RECT

NT20

COLOURS



至 75 □100 X 70



CARIBOU 70

NT17

COLOURS



至 75 □75 X 75



CAROLINA 70

NT07

COLOURS



至 73 Ø120



CASSIA 70 A

NT23 STEEL TOP

COLOURS



至 70 Ø60



CASSIA 70 B
NT25 STEEL TOP

COLOURS



至 70 Ø80



CASSIA 70 SQUARE
NT24 STEEL TOP

COLOURS



至 70 □60 X 60



CODE 60

CT39

COLOURS



至 42 □59 X 59



CODE 120

CT40

COLOURS



至 32 □119 X 59



COLUMBIA 70 A
NT21

COLOURS



至 76 Ø60



COLUMBIA 70 B
NT22

COLOURS



至 76 Ø80



COLUMBIA 70 SQUARE

NT28

COLOURS



至 70
□80 X 80



CRYSTAL 70 A

NT23 GLASS TOP

COLOURS



至 70 Ø55



CRYSTAL 70 B
NT25 GLASS TOP

COLOURS



至 70 Ø80



FARO 40
CT06 COFFEE TABLE

COLOURS



至 43
Ø60



FENTINI 40 ROUND
CT05 COFFEE TABLE

COLOURS



至 47
Ø60



FIRBANK 40 A
CT13 COFFEE TABLE

COLOURS



至 50 Ø60



TABLES & BAR TABLES

FIRBANK 40 B
CT14 COFFEE TABLE
COLOURS

全 50 Ø80



FIRENZE 40 RECT
CT15 COFFEE TABLE
COLOURS

全 40 □120 X 80



FIRENZE 40 SQUARE
CT16 COFFEE TABLE
COLOURS

全 40 □80 X 80



FIRENZE 70 RECT
NT26 GLASS TOP
COLOURS

全 70 □150 X 80



FIRENZE 70 SQUARE
NT27 GLASS TOP
COLOURS

全 70 □80 X 80



MEDOLA SQUARE
NT29
COLOURS

全 75 □80 X 80



MEDOLA COFFEE SQUARE
CT30
COLOURS

全 40 □80 X 80



MEDOLA 120
NT36 120 X 80
COLOURS

全 75 □120 X 80



MEDOLA COFFEE 120
CT36
COLOURS

全 40 □120 X 80



MEDOLA 160
NT34 160 X 80
COLOURS

全 75 □160 X 80



MEDOLA COFFEE 160
CT38
COLOURS

全 40 □160 X 80



LARGE GARDEN TABLE
GF31
COLOURS

全 76 □149 X 86



LEVANTE 40
CT17 COFFEE TABLE
COLOURS

全 45 □45 X 45



LEVANTE 70
NT30
COLOURS

全 75 □120 X 60



LEVANTE 110
BT09 TALL TABLE
COLOURS

全 110 □170 X 60



MEDOLA CONFERENCE 120
NT37
COLOURS

全 75 □120 X 80



MEDOLA CONFERENCE 160
NT38
COLOURS

全 75 □160 X 80



**MOGORO
CONFERENCE**

EF25
COLOURS



至 76
□ 240 X 100



MOGORO 170

EF22
COLOURS



至 75 Ø170
H



MOGORO 180

EF23
COLOURS



至 75 Ø180
H



MIURA 110

BT19
COLOURS



至 110
Ø60



**OCTAGONAL
GARDEN TABLE**

GF30
COLOURS



至 76
□ 102 X 102



ORSO 70

NT37
COLOURS



至 72
Ø70



ORSO 110

BT20
COLOURS



至 110
Ø70



SEA 40

CT18 COFFEE
TABLE

COLOURS



至 40
Ø60



SEA 70

NT31
COLOURS



至 74
Ø75



SEA 110

BT10 BAR TABLE
COLOURS



至 110
Ø60



TENERIFE 105

BT12
COLOURS



至 106
Ø60



TEXAS 110

BT03 BAR TABLE
COLOURS



至 110
Ø60



TORONTO 110

BT02
POSEUR TABLE
COLOURS



至 128
Ø80



TURIN 110

BT07 BAR TABLE
COLOURS



至 105 Ø60



**TURIN 110
SQUARE**

BT08 BAR TABLE
COLOURS



至 105
□ 60 X 60



SURF OVAL

NT32
COLOURS



至 74
○ 180 X 80



**TAVERNE /
BAGNI**

NT33 / BE33
COLOURS



至 220 至 50
至 78 至 48
H



**TRESTLE
TABLE 4FT**

UT10 4"
COLOURS



至 76 □ 121 X 76
H



TABLES & BAR TABLES

TRESTLE TABLE 6FT 
UT11 6'
COLOURS

全 76 □ 183 X 76
H



TRESTLE TABLE 4FT + DRAPE
UT10D
COLOURS

全 76 □ 121 X 76



TRESTLE TABLE 6FT + DRAPE
UT11D
COLOURS

全 76 □ 183 X 76



UTAH A 
UT01 BANQUET TABLE
COLOURS

全 77 ∅ 121
H



UTAH B 
UT02 BANQUET TABLE
COLOURS

全 77 ∅ 150
H



UTAH C 
UT03 BANQUET TABLE
COLOURS

全 77 ∅ 180
H



VEGAS 40 SQUARE
CT09 COFFEE TABLE
COLOURS

全 37 □ 60 X 60



VEGAS 40 RECT
CT10 COFFEE TABLE
COLOURS

全 37 □ 90 X 60



VEGAS 40 ROUND
CT11 COFFEE TABLE
COLOURS

全 37 ∅ 81



VEGAS 40 OVAL
CT12 COFFEE TABLE
COLOURS

全 37 ∅ 114 X 84



TRALEE 110
BT04 BAR TABLE
COLOURS

全 109 ∅ 60



VENICE 40 SQUARE A 
LC14 BLACK TOP
COLOURS

全 39 □ 60 X 60



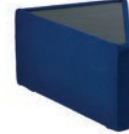
VENICE 40 SQUARE C 
LC14 LIGHT OAK TOP
COLOURS


全 39 □ 60 X 60



VENICE 40 TRI A 
LC15 BLACK TOP
COLOURS

全 37 □ 54 X 64



VENICE 40 TRI C 
LC15 LIGHT OAK TOP
COLOURS

全 37 □ 54 X 64



VIENNA 40 
LC08 COFFEE TABLE
COLOURS

全 33 □ 66 X 72



ZANZI 70
NT18
COLOURS

全 75 □ 63 X 63



ZANZI 110 SQUARE
BT18
COLOURS

全 105 □ 63 X 63



COUNTERS & SHOWCASES

ALPINA BAR CORNER
BC02 ILLUMINATED BAR
COUNTER
COLOURS

至 110
□ 90 X 80 ☀️ ⚡️



ALPINA BAR COUNTER
BC04 ILLUMINATED BAR
COUNTER
COLOURS

至 110
□ 120 X 75 ☀️ ⚡️



ALPINA BAR CURVE
BC05 ILLUMINATED
BAR COUNTER
COLOURS

至 110
□ 173 X 77 ☀️ ⚡️



BERN
DC26
COLOURS

至 106
□ 101 X 41 🗄️



BRINDISI
DT30
COLOURS

至 103
□ 117 X 46



BRINDISI
CORNER
DT31
COLOURS

至 103
□ 90 X 45



BUNDERBURG ✓
BC01 BAR
COUNTER
COLOURS

至 120
□ 123 X 75



DEAUVILLE ✓
RC01 RECEPTION
COUNTER
COLOURS

至 104
□ 123 X 75



ETNA 50 ✓
DC25
COLOURS

至 91
□ 53 X 53 🗄️



ETNA 100 ✓
DC22
COLOURS

至 90
□ 100 X 54 🗄️



GRIANTE 100 ✓
DC23
COLOURS

至 200
□ 100 X 51
🗄️ ☀️ ⚡️



GRIANTE 50 ✓
DC24
COLOURS

至 200
□ 51 X 51
🗄️ ☀️ ⚡️



GUIDO 100 ✓
DC21
COLOURS

至 200
□ 100 X 43
🗄️ ☀️ ⚡️



SORRENTO ✓
DC18 TOWER
COLOURS

至 183
□ 51 X 51
🗄️ ☀️ ⚡️



VERONA WL ✓
DC20
COLOURS

至 180
□ 52 X 52
🗄️ ☀️ ⚡️



CONFERENCE & OFFICE FURNITURE

LADENO
DD10
COLOURS

至 68
□ 43 X 76
🗄️



LONDON 1200 ✓
DESK
DT19, DT01, DT14, DT24
COLOURS

至 70
□ 120 X 80



CONFERENCE & OFFICE FURNITURE

LONDON 1600 DESK

DT20, DT02, DT15, DT25
COLOURS



全 70
□ 160 X 80



LONDON 800 DESK

DT22, DT04, DT17, DT27
COMPUTER DESK
COLOURS



全 70
□ 80 X 80



LONDON BANKING BANKING UNIT

DT23, DT05, DT18, DT28
COLOURS



全 105
□ 160 X 80



LONDON COMPUTER CUPBOARD

CB29, CB27, CB28, CB30
COLOURS



全 100
□ 64 X 79
🔒



LONDON LOW CUPBOARD

CB13, CB01, CB12, CB14
COLOURS



全 72
□ 100 X 50
🔒



LONDON MEDIUM CUPBOARD

CB19, CB07, CB18, CB20
COLOURS



全 100
□ 100 X 50
🔒



LONDON PED 3 - DRAWER

DD08, DD02, DD07, DD09
COLOURS



全 60
□ 100 X 50
🔒



CUNEO OC16

COLOURS



↳ 49 ↗ 46
全 81 - 95
↳ 41 - 54



CUNEO HIGH BACK OC15

COLOURS



↳ 49 ↗ 46
全 99 - 112
↳ 40 - 54



SOLARA A OC12 TYPISTS CHAIR

COLOURS



↳ 57 ↗ 45
全 79 - 93
↳ 44 - 54



SOLARA B OC13 OPERATORS CHAIR

COLOURS



↳ 57 ↗ 45
全 78 - 93
↳ 44 - 54



SOLARA C OC14 COUNTER CHAIR

COLOURS



↳ 57 ↗ 45
全 101 - 126
↳ 56 - 80



MEDOLA SQUARE NT29

COLOURS



全 75 □ 80 X 80



MEDOLA COFFEE SQUARE CT30

COLOURS



全 40 □ 80 X 80



MEDOLA 120 NT36

120 X 80
COLOURS



全 75
□ 120 X 80



MEDOLA COFFEE 120 CT36

120 X 80
COLOURS



全 40
□ 120 X 80



MEDOLA 160 NT34

160 X 80
COLOURS



全 75
□ 160 X 80



**MEDOLA
COFFEE 160**
CT38
COLOURS



全 40
□ 160 X 80



**MEDOLA
CONFERENCE 120**
NT37
COLOURS



全 75 □ 120 X 80



**MEDOLA
CONFERENCE 160**
NT38
COLOURS



全 75 □ 160 X 80



**MOGORO
CONFERENCE**
EF25
COLOURS



全 76
□ 240 X 100



DISPLAYS & SHELVES

A5 REGAL
SU22 SHELVING UNIT
COLOURS



ト 75 ㊦ 30
全 170



CANTANIA
LD13 A4
COLOURS



ト 30 ㊦ 30
全 120



LEON
LD10 LIT STAND
COLOURS



ト 30 ㊦ 42
全 154



RIVA
MS35 CATALOGUE
DISPENSING BIN
COLOURS



ト 32 ㊦ 45
全 120



SPECTRO
LD08 LITERATURE
STAND
COLOURS



ト 30 ㊦ 29
全 170



STERLING 3
SU06 SHELVING UNIT
COLOURS



ト 90 ㊦ 35
全 99



STERLING 4
SU07 SHELVING UNIT
COLOURS



ト 90 ㊦ 35
全 130



STERLING 5
SU08 SHELVING UNIT
COLOURS



ト 90 ㊦ 35
全 162



STERLING
LITERATURE RACK
LD12
COLOURS



ト 90 ㊦ 45
全 181



TEMPO
SU10 LAPTOP STAND
COLOURS



全 110
○ 80



WEXFORD 50
PL18 STORAGE PLINTH
COLOURS



ト 70 ㊦ 70
全 50



DISPLAYS & SHELVES

WEXFORD 90 
PL17 STORAGE PLINTH

COLOURS



↳|70 | 70
全 90



MISCELLANEOUS

**ABANO BIN
LARGE**
MS36 45 LITRE
COLOURS



全 49 Ø 39



**ABANO BIN
SMALL**
MS04
COLOURS



全 33 Ø 30



**ACRI STAND
MS40 COAT STAND**
COLOURS



全 158 Ø 60



**CHEVAL
MIRROR**
MS19 CHROME
COLOURS



↳|49 | 49
全 149



**FLIP TOP BIN
MS20**
COLOURS



全 62



**FRIDGE L/H
MS02/L 140 LITRE**
COLOURS



↳|54 | 57
全 84
↓, ↓



**FRIDGE R/H
MS02/R 140 LITRE**
COLOURS



↳|54 | 57
全 84
↓, ↓



**FRIDGE TALL
MS42 330 LITRE**
COLOURS



↳|60 | 60
全 175
↓, ↓



**GLASS
FRONTED
COOLER UNIT** 
MS37 GLASS FRONTED
COLOURS



↳|51 | 58
全 87 ↓, ↓



FRIDGE TALL 
GLASS
MS43 360 LITRE FRIDGE
COLOURS



↳|60 | 60
全 183
↓, ↓



**INFOPANEL A0
PORTRAIT
MS15**
COLOURS



↳|126 | 31
全 187



**INFOPANEL A1
PORTRAIT
MS13**
COLOURS



↳|94 | 31
全 187



**INFOPANEL A1
LANDSCAPE
MS12**
COLOURS



↳|94 | 31
全 162



**INFOPANEL A0
LANDSCAPE
MS14**
COLOURS



↳|156 | 31
全 187



**LICATA
MS62**
COLOURS



↳|59 | 45
全 110-119
全 106-117



LOCRI POST
MS09 CHROME
COLOURS

┆|33 ┆|33
至100



LOCRI ROPE
MS11 WITH HOOKS
COLOURS

┆|150



MINIFRIDGE
MS22 80 LITRE
COLOURS

┆|50 ┆|50
至64
⚡



PARASOL
GF32
COLOURS

至213 ∅168



RAVENNA 6FT
MS18 GOWN RAIL
COLOURS

┆|183 至167



RAVENNA EXT
MS26 GOWN RAIL
COLOURS

┆|150 - 250
至120 - 210



RAVENNA HANGERS
MS23 PACK OF 10



RIGA
MS30 COAT
STAND
COLOURS

至170 ∅36



RIO
MS01 COAT
STAND
COLOURS

至175



SALERNO LOCKER UNIT
MS38 WITH KEY LOCKS

┆|30 ┆|45
至180



SECURITY SAFE
MS28

┆|45 ┆|40
至61



TENSATOR DELUXE POST
MS31 CHROME C/W
1.8M WEBBING
COLOURS

至96 ∅36



TENSATOR POST
MS41 BLACK C/W
1.8M WEBBING
COLOURS

至97 ∅29



TENSATOR SIGN PANEL
MS61

┆|21 至30



TERMINI
MS32 FLIP CHART
STAND
COLOURS

┆|81 ┆|70
至170



TERMINI PAD
MS33
COLOURS



TERMOLI
MS29 CARRIER BAG STAND
COLOURS

┆|44 至80
∅40



WATER DISPENSER
MS06 COLD - WATER AND CUPS
NOT INCLUDED
COLOURS

至136 ∅31
⚡



WATER (FOR DISPENSER)
MS07 19 LITRE BOTTLE

WATER CUPS (FOR DISPENSER)
MS08 PACK OF 100

